

## 2012 SAME Tulsa/Arkansas Posts Future Work and Small Business Symposium

**Greg Kuhn, PE, F.SAME**  
**TEXOMA RVP**



# **Society of American Military Engineers**

---

# SAME Who We Are

**Installations**

**A/E/C Industry**

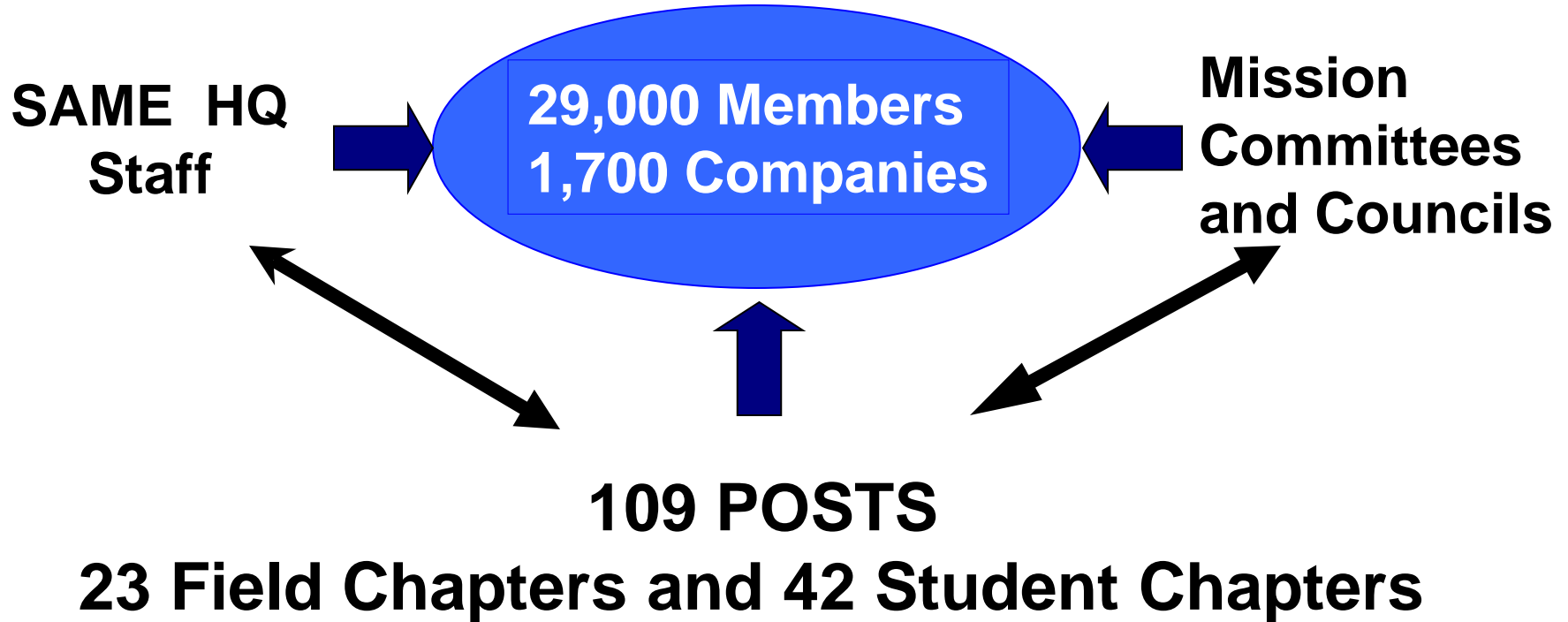
**Troops**

**Civil Works**



# SAME - 2012

Board of Direction  
(43 Voting Members)

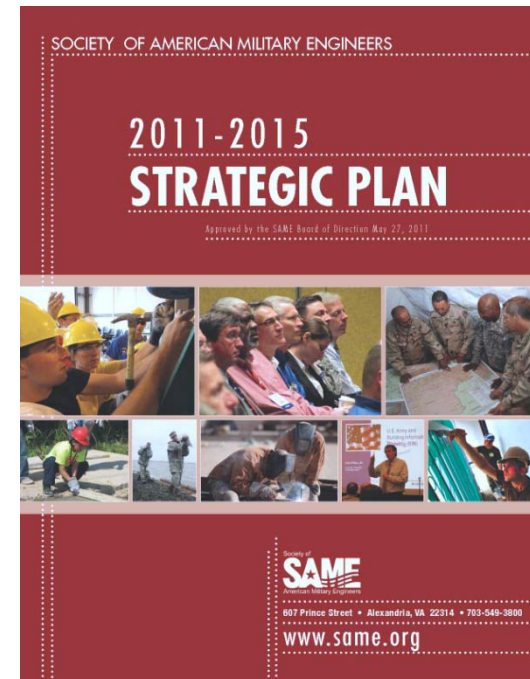


# 2011 - 2012 Focus Areas

- **Joint Engineer Contingency Operations**
  - Established JECO Committee to provide greater focus on engineer operations in Iraq, Afghanistan and future conflicts
  - Facilitate dialogue on engineering, construction and environmental issues
- **Support to Wounded Warriors and Families of Fallen Warriors**
  - Task Force identified strategies for SAME National
  - Looking for Posts to support wounded warrior organizations
- **Sustainable Installations**
  - Established Sustainability Subcommittee under the SAME Facility Asset Management Committee
  - Support DoD concept of operations for Sustainable Installation through education and collaboration

# 2011- 2015 Strategic Plan

- Emergency Preparedness & Contingency Operations
- Education & Training
- Relationships & Recognition
- Leadership & Mentoring



# SAME and You

- Access To Leadership In All Uniformed Services
- Access To Engineering And Construction Industry Leaders
- Network With Other Professionals Who Have Like Interests And Common Goals

# Partnership of Public and Private Sectors

---

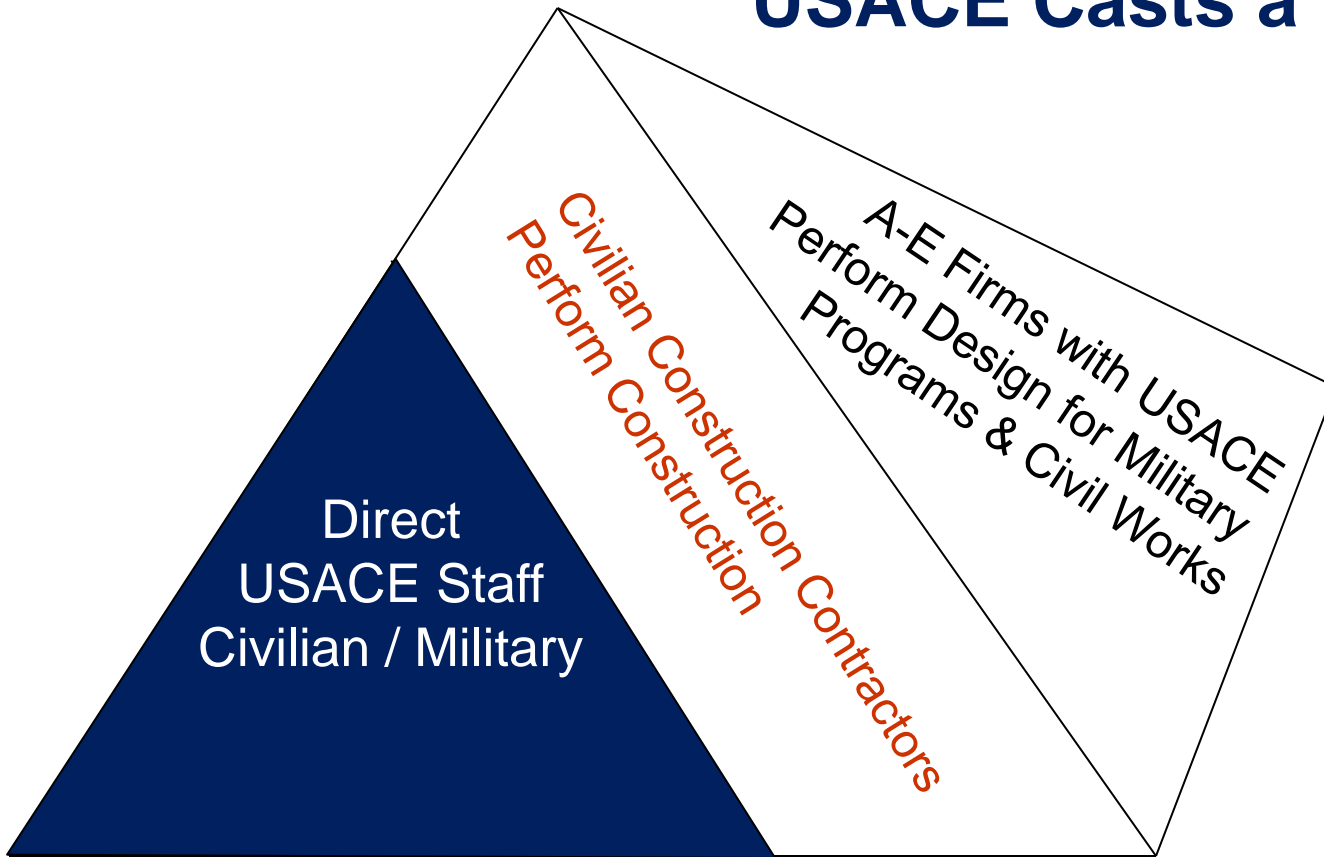


## Overview of USACE Missions

- Military Construction
- Civil Works Studies and Construction
- Overseas Operations
- Installation Support
- Environmental
- Energy and Sustainability
- Interagency Support
- International Services
- Real Estate Services
- Research and Development
- Geospatial Support

# Partnership of the Private and Government Sectors

## USACE Casts a Large Shadow





# Partnership of the Private and Government Sectors

## USACE 2011 Small Business Achievements

	Goal	Awarded	Awarded \$
Small Business	35.0%	42.6%	\$8B
SDB	18.0%	23.7%	\$4.5B
WOSB	6.0%	8.0%	\$1.5B
HUBZONE	10.5%	12.9%	\$2.4B
SDVOSB	3.2%	5.1%	\$0.9B

# Partnership of the Private and Government Sectors

## Project Delivery – Government and Private Sector

- Utilizing Standard Designs & Adapting For Energy Efficiency
- Implement and Utilize BIM
- Energy Modeling, Beginning During The Planning Phase
- Lifecycle Cost Analysis, (LCCA) As Part Of Every Design Analysis
- Early Contractor Involvement On Large Projects (CM@Risk)
- Use Design-Bid-Build, Design-Build And Adapt-Build Delivery Methods

# Partnership of the Private and Government Sectors

## How Industry Can Help

- Share best practices – leverage expertise in technology, construction, maintenance and management to be more efficient
- “Back to Basics” concept
  - Be innovative and help drive energy efficient solutions
  - Be more environmentally friendly
  - Continue to push new technologies
  - Continue to watch schedule
  - Stay engaged, provide feedback



# Partnership of the Private and Government Sectors

---

***“Meeting Mission Requirements  
Worldwide With On-time Delivery Of  
World-class Professional Design And  
Construction Services”***

---